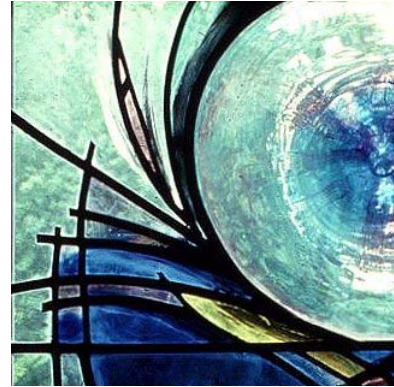




House in Jordan
Price: £6500.00



Door Panels
Price: £4500.00



Window
Price: £5500.00

Mollie Meager

Awards: 1998 Project Award, South West Arts Board 1993 Development of Work Award, South West Arts Board 1988 Training Grant, South West Arts Board

Commissions: 2001 Windows for classroom at Westhope College, commissioned by Westhope College 2000 Eighteen windows for tower as part of Cinderford Triangle regeneration project, commissioned by Cinderford Town Council, Gloucestershire County Council 2000 Millenium Window, St Peter's Church, Rous Lench, Evesham, commissioned by St Peter's Church 1998 Stained & engraved glass screen in waiting area of Cirencester Forum, commissioned by Gloucestershire County Council, through the Percent for Art Scheme 1995 The Cock Crows Twice, stained glass window, commissioned by PenHill Church, Swindon 1994 Stained glass window, Cherry House, Camphill Village, Newham Gloucestershire, commissioned by Camphill Village Trust Community 1993 West Window. Stained glass, Redbrook Church, Monmouth, Wales, commissioned by Redbrook Church PCC

Education: 1993–96 Workshops with Patrick Reyntiens, Lise Autogena and Ursula Huith. 1985–90 Filton College, Bristol

Group Exhibitions: 2001 Working the Light, Bishops Gallery, Bishops Castle 2001 El Basque, La Galeria Imago, Cuba, organised by Intercambio Cuba & Forest Artists de Inglaterra 2000 Land Space and Place, Sofiero Castle, Helsingburg, Sweden, organised by Gloucestershire Skane Exchange 2000 'Top Glass' Contemporary Glass, The Black Swan Guild, Frome 1998 Conversation Pieces - with Davina Kirkpatric & Penny Sommerville 1997 Fresh Air - Quenington Sculpture Show, Quenington Old Rectory, Cirencester, organised by Lucy Abel Smith (catalogue) 1996 Room for Breathing Light, an instillation with Sue Chudley, Newent Market House, Gloucestershire 1994 Six Stained Glass Artists, Happening Gallery, Bristol

Solo Exhibitions: 1990 Mollie Meager Retrospective, Guildhall

Travel: Nationally, Yes Internationally, Yes



Press Quotes: Articles 1993 Stained Glass Magazine, 'Mollie Meager, Stained Glass'
Books 1998 Design Source Book. Stained Glass. New Holland Publishing – Lynette
Wrigley 1993 Image of Panel in Redbrook Church, Women's International Diary

Maker's Statement:

I live in the Forest of Dean, which has focused my work onto light, dark, and colour. Glass is invisible but through mark making on its surface, it interacts with the visible world beyond. I use a series of different techniques to achieve the desired result. I etch the colour from the surface of the glass and I paint onto the glass, this blocks out the light. Engraving and sandblasting holds the light on the glass. Studio visits are welcome.

Commissioning Procedure:

Private Houses I will visit you in your home bringing with me examples of my work. By being there, I can see the kind of environment that you enjoy living in, and how you respond to different examples of my work. I can see the position of the window, its aspect, and we can discuss whether its purpose is to enhance the view beyond the window or to hide it. By looking at examples of my work, we can discuss the influence that the glass will have upon the space and where appropriate, a theme. I will take photographs and measurements and it is the measurements that will determine the price. I then take all this information away with me, and produce a design which I will submit to you for your approval before beginning the work. You are welcome to visit me in my studio to discuss the project and see examples of my work. If you live more than 100 miles away from me then I expect you to pay my travelling expenses to visit you. Commissioning for a public building The same process applies as above, but in addition, in situations where communities will be living with the commission, I offer to involve them in the design process by running a workshop, where we can discuss the ideas behind the project and make a collage together which I will make use of when I am designing. Sometimes, a small group can be involved in some parts of the fabrication. In my studio Another approach is for the client to be involved in a much more hands on way. They can come and work with me in my studio, and be involved in the designing and making process. Exhibition Pieces I exhibit my work and have freehanging panels for sale

Pricing Policy:

The fee for the design is 1/7th of the total cost and I would expect that payment when the design is approved. Before beginning fabrication, I expect 1/3rd of the full amount, 1/3rd on completion, and the final 1/3rd on installation. On a large project an intermediate payment might be called for

VAT Registered: No

